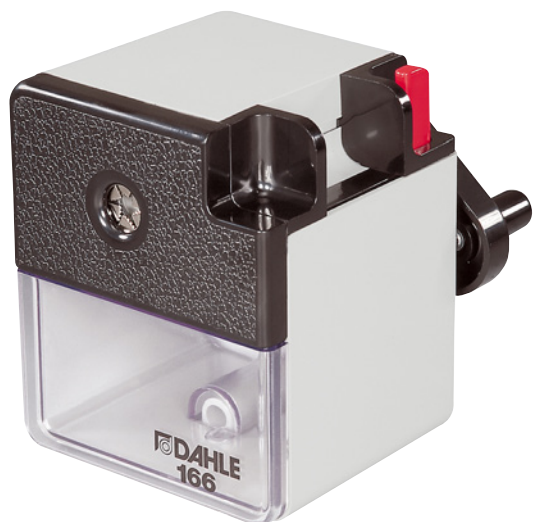


# DAHLE PENCIL SHARPENER

## PREMIUM SHARPENER



When creativity strikes your pencil needs to be ready! This pencil sharpener is the perfect solution to insure you're never scrambling to sharpen your creative instrument.

It's all about control with Dahle's Premium Pencil Sharpener. With the twist of a dial you can set the degree of sharpness for your pencil. Whether you need a fine tip or a blunt edged point, Dahle's Automatic Cutting System sharpens to your personal preference then spins freely to prevent over-sharpening. This sharpener not only gives you the optimal results you desire, but it also saves lead.

This commercial grade sharpener is designed for constant use from multiple users. It accepts standard graphite as well as oversized artist pencils through the sharpener's extra large pencil opening. The cutting blades can also be removed and cleaned to prevent any waxy buildup. A mounting clamp is included but not necessary for portable sharpening.

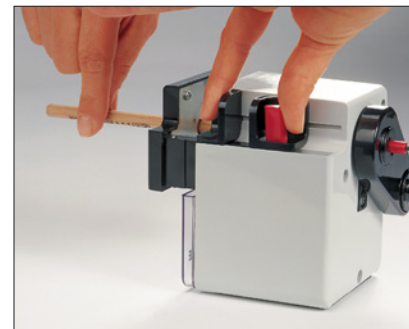


## PREMIUM PENCIL SHARPENER

- ▶ Automatic Cutting System sharpens lead evenly and prevents over-sharpening
- ▶ Precision cutting blades made of Solingen Steel
- ▶ Accepts oversized artist pencils
- ▶ Point adjuster for sharp or blunt tip
- ▶ Easy to clean blades are perfect for use with graphite and colored pencils
- ▶ Easy to clean transparent shavings cup
- ▶ Mounting clamp included but not necessary for portable sharpening



*Mounting is not necessary which allows for easy placement and portability.*



*Automatic Cutting System pulls the pencil in to sharpen, then spins freely to prevent over-sharpening.*

## PRODUCT SPECIFICATIONS

### PREMIUM SHARPENER

ITEM	DESCRIPTION
166	Premium Rotary Sharpener